

SCHEMA PRODOTTO

Melampo Mega



Base in zama verniciata; stelo in alluminio verniciato; diffusore in raso di seta, supportato da materiale plastico.

Grigio Alluminio



HALO Qi32 Terra





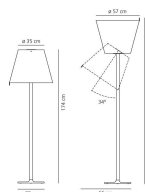


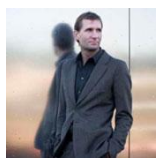


 650° IP20



W	Dimensioni	Flusso Luminoso (lm)	Color	Code	Nome del prodotto
300W	H 174 cm	2870lm		0577010A	Melampo Mega - Grigio alluminio
				0577020A	Melampo Mega - Bronzo Ecrù

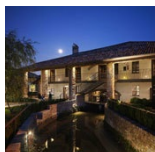




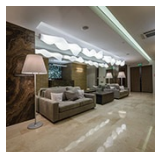
Progetti



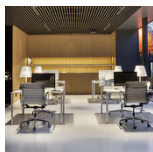
› Hotel Olympia



› Hotel Mulino Grande



› MFC Capital City



› Agence Varenne, Avenue George V