

design JASPER MORRISON

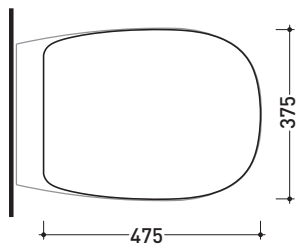
2014

BNCW03

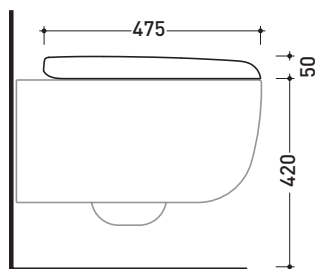
Coprivaso avvolgente in termoindurente a discesa rallentata con cerniere a sgancio rapido

Complementi: Bonola vaso sospeso (BN118)
Bonola goclean vaso sospeso (BN118G)

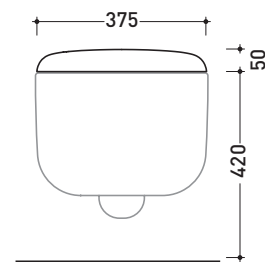
Dim. Imballo 55 x 40 x 7 | Peso 3,8 kg | Pz. Pallet n° -



vista zenitale / zenital view



vista laterale / lateral view



vista frontale / frontal view

dimensioni in mm

gennaio 2016

TERMOINDURENTE: finiture lucide



finiture opache

