

# STONE VASO SOSPESO SENZABRIDA® STS07.BI

CE EN 14528:2015



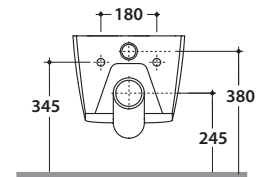
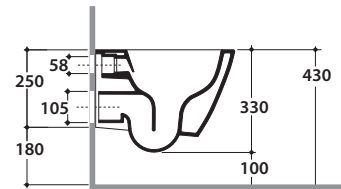
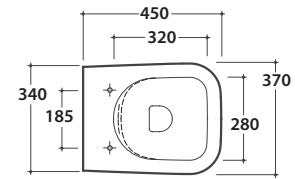
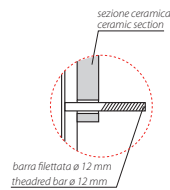
Effetto antibatterico su ceramica  
BATAFORM®  
Ceramic antibacterial effect  
BATAFORM®



Bagno di Colore



Prodotto smaltato con  
CERASLIDE®  
Glazed product with  
CERASLIDE®



Cod. **STS07.BI**

Vaso sospeso SENZABRIDA® 45.36 h33 cm. Scarico 4 / 2,6 Lt. Completo di fissaggi. Peso 19 Kg  
Wall-hung Wc No-rim 45.36 h33 cm. Drain 4 / 2,6 Lt. Fixing kit included. Weight 19 Kg



Coprivater con sistema di  
cerniere a sgancio rapido  
Seat-cover with hinge system  
to quick release



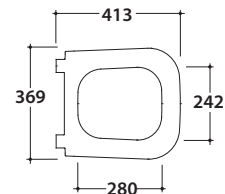
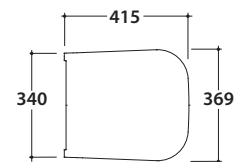
Trattamento antibatterico per sedili in  
versione bianco lucido  
Antibacterial treatment on toilet seats  
in shiny white

Cod. **ST023BI**

Coprivaso rimovibile in duroplast con chiusura tradizionale. Peso 3,5 Kg  
Removable duroplast seat-cover with traditional closing system. Weight 3,5 Kg

Cod. **ST024BI**

Coprivaso rimovibile in duroplast con chiusura rallentata. Peso 3,5 Kg  
Removable duroplast seat-cover with soft-closing system. Weight 3,5 Kg



Cod. **VA132**

Riduttore flusso di scarico.  
Flow reductor.



Cod. **PU001**

Protezione antiurto e acustica.  
Acoustic and crash protection.



Cod. **FI002**

Staffa di fissaggio a "L". Peso 2,5 Kg  
Fixing brackets for W/H sanitary. Weight 2,5 Kg